

# Central Office of Measures

<https://www.gum.gov.pl/en/about/departments/115,Departments.html>  
03.05.2024, 21:45

## Departments

Published by: Adam Żeberkiewicz

Administration of Measure in Poland consists of:

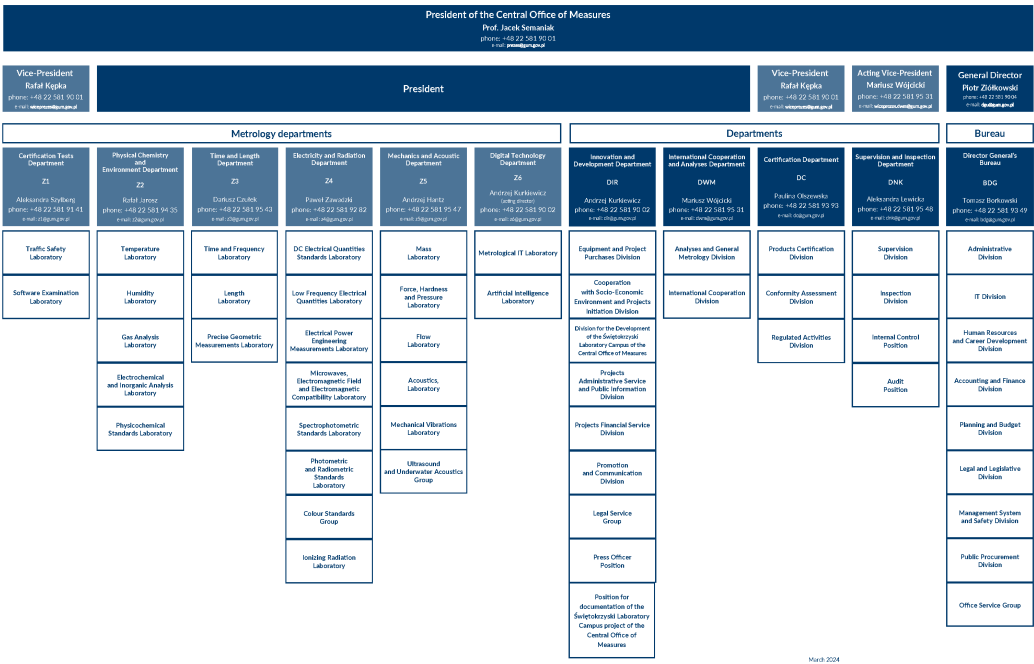
- Central Office of Measures (seat in Warsaw),
- 10 Regional Offices of Measures (placed in Bialystok, Bydgoszcz, Gdansk, Lodz, Katowice, Cracow, Poznan, Szczecin, Warsaw and Wroclaw).

Hallmarking administration bodies in Poland includes:

- President of the Central Office of Measures,
- directors of the Regional Assay Offices (in Warsaw and Krakow).

Directors of the Regional Assay Offices perform their duties through the Regional Assay Offices, together with their branch offices.

### GUM ORGANISATION CHART



March 2024

The structure of the Central Office of Measures includes the following organizational sections:

- Certification Testing Department
- Physical Chemistry and Environment Department
- Time and Length Department

- Electricity and Radiation Department
- Mechanics and Acoustics Department
- Digital Technology Department
  
- Certification Department
- International Cooperation and Analyses Department
- Innovation and Development Department
- Supervision and Inspection Department
- Director General's Bureau

---

## DOWNLOADS

---

[GUM organizational chart - March 2024 \(pdf, 480.55 KB\)](#)20.03.2024 11:32